

CENTRA SECURITY SYSTEMS (UK)

10 Riverside Business Park Stansted Essex CM24 8PL UK

www.centrasecurity.co.uk Tel: ++44 (0)1279 816485 info@centrasecurity.co.uk

EXPLOSION PROOF CAMERA - ATEX TESTED CONFORMITY

Delivers superb picture quality for process monitoring and surveillance technology (CCTV). This camera is also approved for danger zones (dust and gas explosion risk zones) in accordance with the **EU directive 94/9/EC (ATEX)**.

Built to protect against IIA & IIC Explosion Groups

Stainless Steel housing designed with IP67 protection and are resistant to seawater. The borosilicate glass of the housing is scratch-proof and free of optical distortions is perfectly suited for applications in **chemically aggressive environments**.



Extremely high light sensitivity by 1/3" Sensor and DC Iris.

The Camera includes a newly developed 1/3" Super HAD™ Interline Transfer CCD sensor that provides increased sensitivity compared to cameras featuring the 1/4-type Super HAD™ CCD.

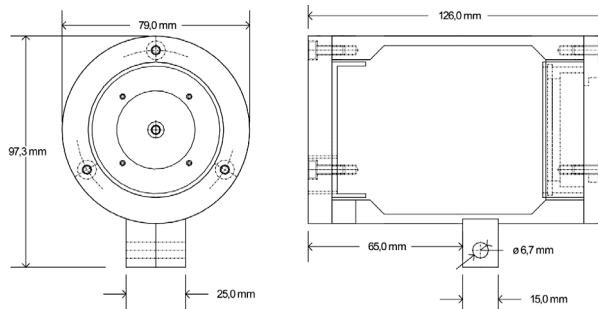
Day/Night capability, which provides optimum sensitivity in both day and night shooting applications. As the scene illumination darkens, the infrared filter is automatically removed. The camera then switches to B&W mode enabling it to operate under a minimum illumination of 0.15 lx (AGC-Turbo, B&W).

Range of temperature:

without Heating 0°C to +50°C
with Heating -20°C to +50°C

Camera:

Power supply: +12VDC to +30VDC
Reference power: 24VDC
Input current: 530mA
Max. Power: 5.5W
Power supply: +12VDC to +24VDC
Reference power: +24VDC
Input current: 1000mA
Max. power: 10W (VA)
Video: Composite



Wall and ceiling mount adapter

AXIS Video Server For IP Systems

International Power Plug Power input: 90 - 264 VAC

