

Vindicator® Badge Manager 2.0 Enhancements for People Management

Vindicator Badge Manager 2.0 offers one of the most advanced access control badging solutions available for standalone and enterprise-wide applications. By offering powerful capabilities such as a unique and intuitive graphical interface for easily assigning locations and entry rules to cardholders, Badge Manager 2.0 delivers ease-of-use to Vindicator customers.

Badge Manager 2.0 provides exceptional graphical configuration and extended administration capabilities for Vindicator Access Control Systems (ACS). Users will find that the full compatibility with the Vindicator V⁵ (ACS) reduces the time system administrators spend managing their access control system. This fully scalable solution can extend from a single workstation to dozens across the LAN or WAN. And it can grow with the client's organization to facilitate more efficient badging operations.

Market Opportunities:

Badge Manager 7.0 is ideal for Vindicator customers who currently deploy Vindicator access control or Vindicator intrusion detection systems. Incorporating feedback from Vindicator customers, Badge Manager 2.0 is one of several new solutions that provide additional capabilities and ease of use.

CUSTOMER BENEFITS

- Easy to learn and simple to use graphical user interface for badge creation and management
- Provides maximum flexibility for designing and messaging cards from a single badging interface
- Automates the transfer of information to a Vindicator V⁵ Access Control System

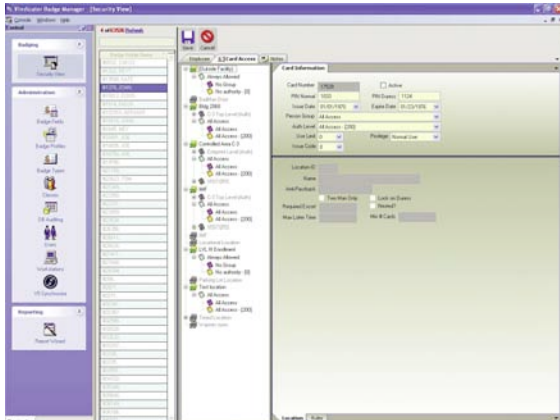
Badge Manager 2.0 features:

- SQL database engine allows quick, automated conversion from a legacy system to Badge Manager
- GUI-based administration for creating and assigning entry rules allows system administrators to save time
- Flexible badge layout and field assignment enables badge profile creation to meet the needs of each user, location and use case

Vindicator Badge Manager 2.0

Enhancements for People Management

Administrators now have a graphical tool to complement the powerful PC SMART PAC configuration platform resident on every V⁵ server.



Card-holder Location Assignment

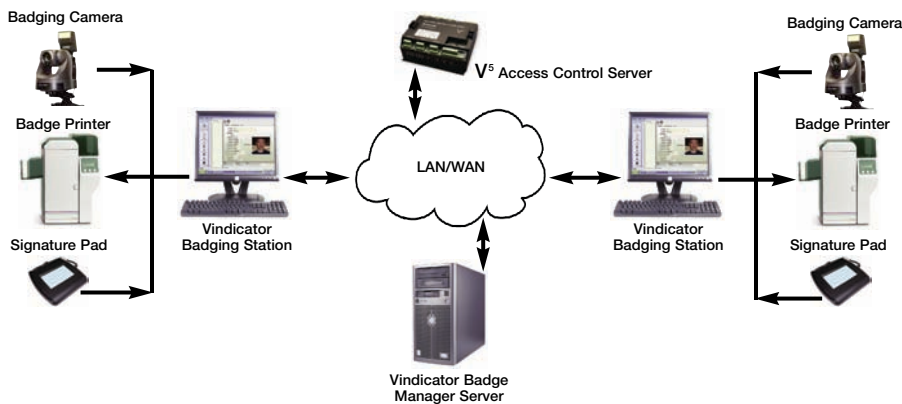
Additional features such as visitor designation and assignment can be configured using Badge Manager 2.0. Authority level rules, schedules and other characteristics can be assigned and synchronized with the V⁵ ACS by the administrator.



Entry Rule Configuration

Entry rules created using Badge Manager 2.0 can be assigned to users by way of Person Groups or Authority Levels. Once assigned, their properties, schedules and other characteristics can be modified and managed through the Badge Manager user interface.

System Diagram



Badge Manager 2.0 can be deployed in a standalone or LAN-based configuration. When installed over a LAN environment, multiple clients can access a shared SQL database, further expanding efficiency across the organization while reducing the potential for duplicate badges.

For more information: www.honeywellvindicator.com

Honeywell Security & Data Collection

Honeywell Vindicator Security Solutions
5307 Industrial Oaks Blvd., Suite 130
Austin, TX 78735
1.512.301.8400 (sales)
1.800.367.1662 (support)
www.honeywell.com