

Supplied & Installed:

CENTRASECURITY (UK)

[www.centrasecurity.co.uk](http://www.centrasecurity.co.uk)

## Surveillance that Never Sleeps



High Resolution Day & Night Camera

## SDN-550

- Day & Night with ICR
- High resolution of 530TV lines
- As low as 0.002Lux sensitivity
- SSNR noise reduction technology takes less DVR space
- Unique BLC function : Spotlight BLC



# Stays awake 24 hours a day ! True Day & Night

**SDN-550** is a high performance surveillance camera built with Samsung Techwin WIII DSP chipset for outstanding image resolution and multiple surveillance capabilities. It supports powerful ICR (Infrared Cutfilter Removal) Day & Night capability and the combination of 530TV lines, 0.002Lux light sensitivity, and SSNR noise reduction technology providing crystal clear image quality. The performance of the SDN-550 will be especially appreciated in huge office buildings, department stores, car parks, perimeters of major industrial facilities, or any other area that requires 24 hour high level surveillance.

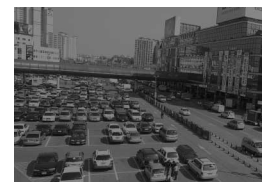


Optimal 24-hour resolution with **ICR Day & Night** capability

The Day & Night capability of the SDN-550 uses ICR (Infrared Cut Filter Removal), a method that enables 530TV lines color image during the day and automatically switches to 570TV lines B/W during the night to provide clear-cut images of any movement. The SDN-550 is truly the optimum choice for your 24-hour surveillance needs.



Day



Night

# Light is better at night !



## High resolution of 530TV lines

High resolution of 530TV lines is possible thanks to the perfect fusion of Super HAD CCD sensor high performance and WIII DSP chip of Samsung Techwin technology. For superior resolution, the camera switches to a B/W mode with 570TV lines automatically when night falls.



Conventional Camera



SDN-550



## Sensitivity of 0.002Lux without noise

The SDN-550 can capture a clear image of a subject in less than adequately lighted environments, or even in the dark. Its light sensitivity is as low as 0.002Lux at F1.2 which means it doesn't miss much. No other general purpose camera can say the same. The SSNR technology eliminates any noise or ghost effect improving low light images even further and the space requirement for DVR recording can be reduced by up to 70 percent.



Conventional Camera



SDN-550



## Unique Spotlight BLC Capability

Spotlight BLC (Back Light Compensation) is Samsung Techwin's unique BLC technology that detects if any strong spots of light exist and compensates for the area as needed to produce clearer images. Spotlight BLC is especially effective for reading the number-plates of cars in streets or parking lots at night.



Conventional Camera

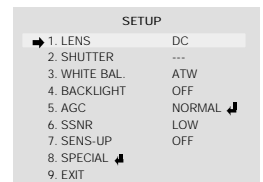


SDN-550



## Convenient function control

The On Screen Display function of the SDN-550 lets you manipulate camera functions right on the screen. Different IDs can be set for different locations also for convenient surveillance management.



OSD functions



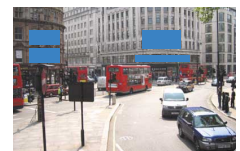
## Auto White Balance for wider applications

The colour temperature range for SDN-550's white balance is from 1,800°K to 10,500°K ; it is wider than that of other cameras. Consequently, natural looking color is possible during the night under Natrium lights, inside a tunnel, in an underground car park, and in a number of other places.



## Block surveillance from selected areas

For convenient privacy protection option, the SDN-550 comes with a built-in function that lets you choose up to 4 areas to mask (as seen in the picture) while they are under surveillance.



High Resolution Day & Night Camera

# SDN-550

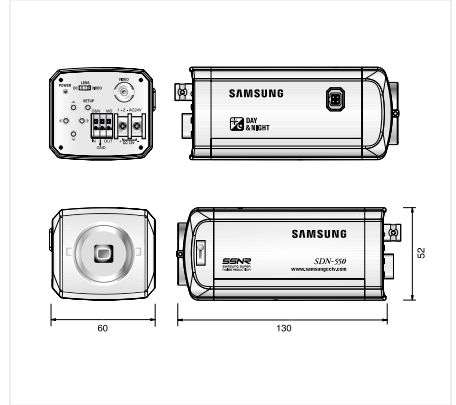


## Specifications

Mode	SDN-550N	SDN-550P	SDN-550PH
Power Source	24V AC ( $\pm 10\%$ ), 12V DC ( $\pm 10\%$ )		230V AC ( $\pm 10\%$ )
Power Consumption	Max. 3.5W		Max. 4.0W
Total Pixels	811(H) x 508(V)	795(H) x 596(V)	
Effective Pixels	768(H) x 494(V)	752(H) x 582(V)	
Image Pick-up Device	1/3" Super HAD CCD		
Scanning System	2 : 1 Interlace		
Scanning Frequency	15.734KHz(H) / 59.94Hz(V)	15.625KHz(H) / 50.00Hz(V)	
Synchronization	Internal / Line lock		
Resolution	530TV lines (Color), 570TV line (B/W)		
Video Output	1.0Vp-p/75 $\Omega$ (Video : 0.714Vp-p, Sync : 0.286Vp-p)	1.0Vp-p/75 $\Omega$ (Video : 0.7Vp-p, Sync : 0.3Vp-p)	
S/N (Y signal)	50dB		
Min. Illumination	Color : 0.3Lux @ F1.2, 0.002Lux (Sens-up) / B/W : 0.01Lux @ F1.2		
Day & Night	Color, B/W, Auto (Filter auto change), EXT (External Day & Night Mode Control Capability via Terminal on the Back Panel)		
BLC	Low / Middle / High / Spotlight / Off selectable		
Gain Control	Normal / High / Off selectable		
SSNR	Low / Middle / High / Off selectable		
White Balance	ATW (1,800K~10,500K) / AWC / Manual		
Electronic Shutter Speed	Auto (1/60sec~1/120,000sec) Manual : (128X ~ 2X, 1/60 ~ 1/120K)	Auto (1/50sec~1/120,000sec) Manual : (128X ~ 2X, 1/50 ~ 1/120K)	
Sens-up	Auto / Off (Selectable limit 2X ~ 128X)		
OSD	Built-in		
Motion Detection	On / Off (3 Programmable zone)		
Privacy Function	On / Off (4 Programmable zone)		
Mirror	On / Off (Horizontal image inversion)		
IRIS Control	Control DC / Video IRIS lens		
Sharpness	On / Off (Level adjustable)		
Digital Zoom	On / Off (2X ~ 10X)		
Lens Mount	CS Mount (Easy focus type) / C Mount is mountable by using adaptor		
Operating	Temperature	0°C ~ +50°C	
	Humidity	30% ~ 80% RH	
Dimension	60(W) x 52(H) x 130(D)mm		
Weight	350g	510g(with power cable)	

## Dimensions

Unit : mm



## Rear Panel



The Eco mark represents Samsung Techwin's will to create environment-friendly products, and indicates that the product satisfies the EU RoHS Directive.

Design and specifications are subject to change without notice.



**SAMSUNG TECHWIN CO., LTD.**  
145-3, Sangdaewon 1-dong, Jungwon-gu,  
Seongnam-si, Gyeonggi-do Korea 462-703  
Tel : +82-31-740-8137-8139 Fax : +82-31-740-8145  
www.samsungctv.com

**SAMSUNG OPTO-ELECTRONICS UK, LTD.**  
Samsung House, 1000 Hillswood Drive,  
Hillswood Business Park, Chertsey, Surrey KT16 0PS  
Tel : +44-1932-45-5308 Fax : +44-1932-45-5325

**TIANJIN SAMSUNG OPTO-ELECTRONICS CO., LTD.**  
7 Pingchang Rd., Nankai Dist., Tianjin 300190, P.R. China  
Tel : +86-22-2761-4724(33821) Fax : +86-22-2761-6514

DISTRIBUTED BY



I.D-0606